



# SERIES 2500

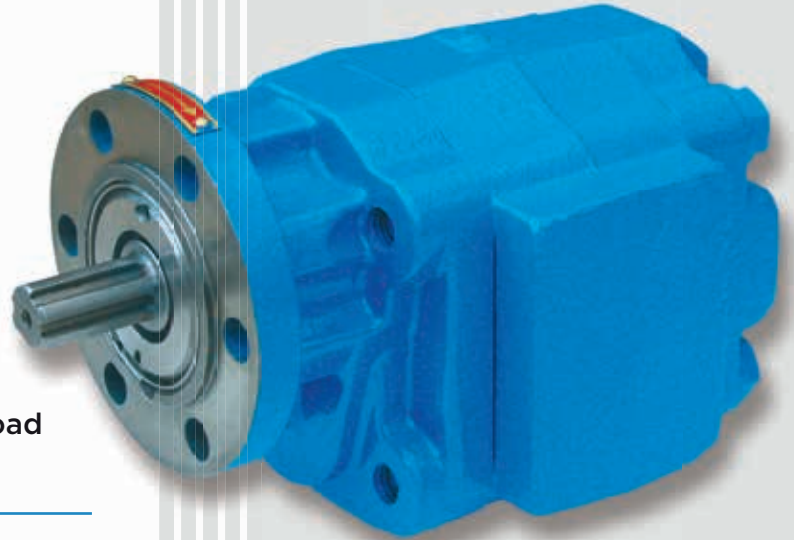
Interchangeable with  
Parker Commercial  
25x Series

ATEX  assessed  
Baseefa 10ATEX0002DRR   
IP50

DATA SHEET  
R2500

## Roller Bearing Gear Pumps and Motors

- Single or multiple units available.
- Displacement 21 cc/rev to 105 cc/rev.
- Minimum operating speed 600 rpm.
- Maximum operating speed 2400 rpm.
- Maximum operating pressure 2250 psi (155 bar).\*1
- Cast iron construction.
- Double bearing option available for side load applications



Single unit

### Mounting Flange Options:

SAE 'B' 2 bolt, SAE 'B' 4 bolt,  
SAE 'C' 2 bolt, SAE 'C' 4 bolt, 6 bolt round.

### Drive Shaft Options:

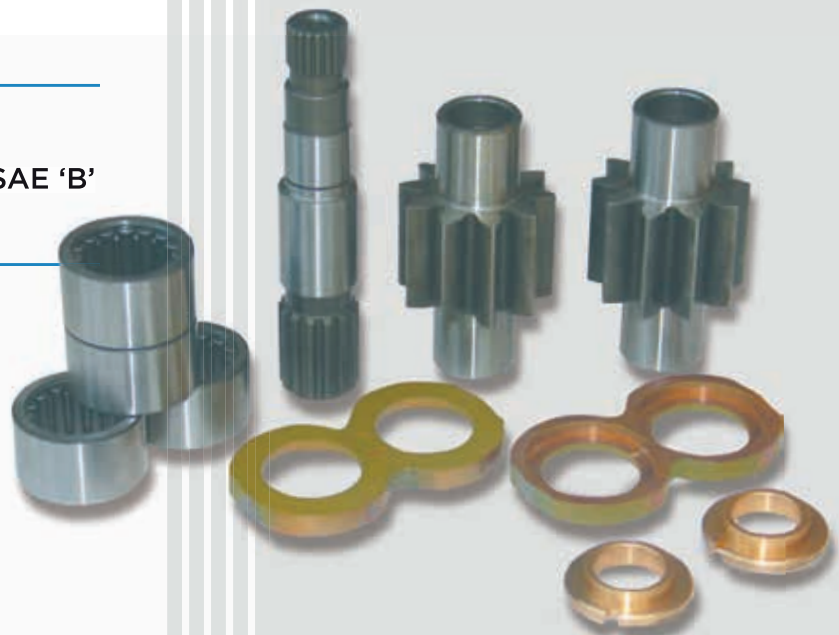
6 tooth, SAE 'B' 13 tooth, SAE 'C' 14 tooth, SAE 'B'  
keyed, 1.1/8" keyed, SAE 'C' keyed.

### Various Porting Options:

BSP, SAE, NPT, JIC (ODT)

\*1 Only available in 21, 32 and 42cc.

Performance and Dimensions overleaf



### Recommended Operating Conditions:

Fluid viscosity, normal operating conditions  
16 to 220 cst.

Fluid temperature should not exceed 65° C.

Recommended system oil cleanliness should  
be equal to or better than ISO4406 19/17/14.

Inlet pressure; for best operation with  
mineral oil, pressure should not exceed minus  
0.237 bar (7 in HG).



Please discuss your application with our sales engineers

# Series 2500 Pumps and Motors

## PERFORMANCE DATA

### Pump Performance

						Input Speed - rpm							
						1000		1500		1800			
Output- L/min/igpm - Input-Kw/Horsepower ▶						Output	Input	Output	Input	Output	Input		
Gear widths - code	Gear widths - inches	Displacement - cc/rev	Maximum continuous working pressure-bar/psi	05	1/2	21	155/2250	18 / 4.0	6 / 8	29 / 6.3	9 / 12	34 / 7.5	11 / 15
				07	3/4	32	155/2250	27 / 5.9	8 / 11	43 / 9.5	14 / 18	51 / 11.2	17 / 23
				10	1	42	155/2250	36 / 7.8	11 / 15	57 / 12.6	18 / 24	68 / 15.0	22 / 30
				12	1.1/4	52	138/2000	46 / 10.1	14 / 18	72 / 15.9	22 / 30	87 / 19.2	26 / 35
				15	1.1/2	63	138/2000	54 / 11.9	16 / 21	87 / 19.2	26 / 35	106 / 23.3	31 / 41
				17	1.3/4	74	138/2000	67 / 14.8	18 / 24	102 / 22.5	30 / 40	124 / 27.3	36 / 48
				20	2	84	138/2000	73 / 16.1	21 / 28	115 / 25.3	34 / 46	139 / 30.6	41 / 54
				22	2.1/4	95	138/2000	80 / 17.6	23 / 31	126 / 27.8	38 / 51	155 / 34.1	46 / 61
				25	2.1/2	105	138/2000	88 / 19.4	26 / 35	141 / 31.2	43 / 57	173 / 38.1	51 / 69

• Flows quoted are at test pressure of 138 bar/2000 psi, using 32cSt oil at 65° C.

• Performance data is derived from tests conducted to simulate working conditions. Continuous operation at maximum performance may compromise unit life.

If in doubt when specifying, please consult our sales department.

### Motor Performance

				Output Speed - rpm				
				800	1200	1600	2000	
Gear widths - code	Gear widths - inches	*Gear widths - inches	Input flow, Output hp & torque	Output Kw / hp	6.5 / 9.0	10.0 / 13.5	13.0 / 17.5	15.5 / 21.0
				Output Nm / in.lb	82.5 / 730	81.5 / 720	80.0 / 710	76.0 / 670
				Input l.min / igpm	41.5 / 9.0	60.5 / 13.5	77.5 / 17.0	96.5 / 21.0
				Output Kw / hp	10.5 / 14.0	15.5 / 21.0	20.0 / 27.0	24.0 / 32.5
				Output Nm / in.lb	129.0 / 1140	127.0 / 1120	124.5 / 1100	117.5 / 1040
				Input l.min / igpm	60.5 / 13.5	87.0 / 19.0	115.0 / 25.5	143.5 / 31.5
				Output Kw / hp	14.0 / 18.5	21.0 / 28.0	27.5 / 37.0	33.0 / 44.5
				Output Nm / in.lb	173 / 1530	169.0 / 1495	166.0 / 1470	159.5 / 1410
				Input l.min / igpm	81.5 / 18.0	117.0 / 26.0	153.0 / 34.0	189.0 / 42.0
				Output Kw / hp	18.0 / 24.0	26.5 / 35.5	33.5 / 45.0	41.0 / 55.0
				Output Nm / in.lb	215.0 / 1900	211.5 / 1870	206.0 / 1820	197.0 / 1740
				Input l.min / igpm	100.0 / 22.0	141.5 / 31.0	189.0 / 41.5	234.0 / 51.5

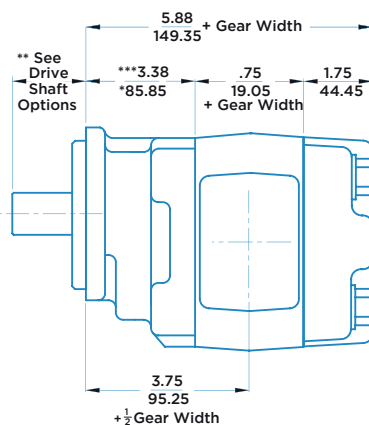
\* These gear widths are the popular sizes for motor configurations but any of the gear widths listed in the Pump Data table can be supplied.

### Weights (approximate)

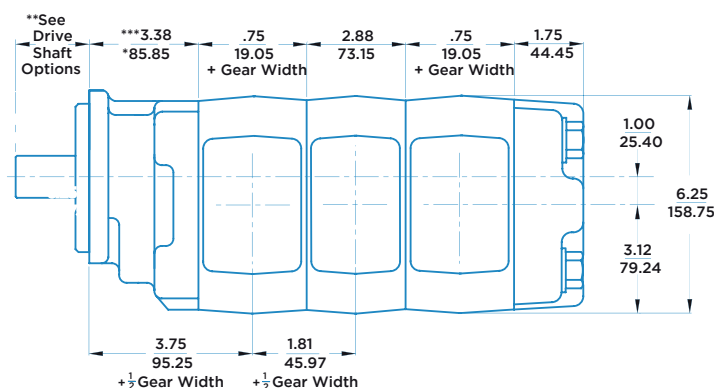
Gear widths (ins)	1/2	3/4	1	1.1/4	1.1/2	1.3/4	2	2.1/4	2.1/2
Single unit (kg)	16.0	18.0	20.0	22.0	24.0	26.0	28.0	30.0	32.0

For multiple unit weights, please consult our sales department.

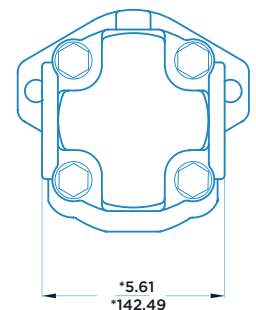
### Dimensions



Single unit



Tandem unit



\* Standard port arrangement, dimension will change with the type of port  
 \*\* Dimensional information for mounting flange and shaft options are shown on the attached Data Sheet FS100.

\*\*\*For double bearing option, dimensions are 4.12 104.64



HYDRAULIC ENGINEERS

Unit 20 Silver Court, Intercity Way, Bramley, Leeds, West Yorkshire LS13 4LY. UK.  
 Tel: +44 (0) 113 2361367 Email: sales@hydra-perm.co.uk web: www.hydra-perm.co.uk